

OWNER'S MANUAL

SEPARATOR



IMPORTANT SAFETY INSTRUCTIONS

To reduce risk of injuries:

- Use this separator only for its intended use as described in this manual.
- Do not pick up anything that is burning or smoking, such as cigarettes, matches, or hot ashes.
- Avoid picking up hard or sharp objects to prevent damaging or clogging the hose.
- Do not put any object into openings. Do not use if an opening is blocked. Keep free of dust, lint, hair and anything that may reduce airflow/suction. Lack of air flow will cause the motor (of your existing unit) to overheat.
- This vacuum cleaner creates suction. Keep hair, face, fingers, all body parts and loose clothing away from any openings.

By overlooking safety rules, you might risk putting your health in danger and to those who surround you!

Drainvac disclaims any responsibility should you infringe upon these guidelines.

SAVE THESE INSTRUCTIONS

REGISTRATION 4

TYPES OF UNITS 5

UNIT DESCRIPTION..... 6

DUST BAG AND FILTERS..... 7

UNIT INSTALLATION

WHERE TO INSTALL7

CONFIG. 1, 2, 3 AND 48

REQUIRED TOOLS9

DIMENSIONS AND MINIMUM SPACING9

OCCASIONAL USE10

PERMANENT INSTALLATION FOR REGULAR USAGE

1) MOUNTING THE UNIT ON THE WALL 11-12

2) CONNECTING THE AIR INLET 12

3) CONNECTING THE AIR OUTLET 13

4) CONNECT THE SEPARATOR TO THE MAIN UNIT..... 13

MAINTENANCE PROCEDURES..... 14

BEFORE STORING AWAY 15

SUPPORT..... 15

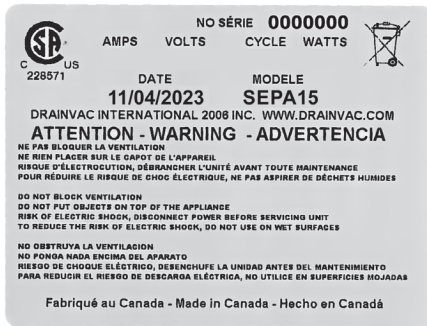
INTRODUCTION

We wish to thank you for your trust and congratulate you for having chosen a Drainvac product. It is a sound investment that will satisfy your vacuuming needs for years to come. Drainvac's central vacuum cleaners are manufactured and checked at our factory by our qualified staff who have been specifically trained to this end. A number of installations and operating methods must be followed to ensure your system's maximum performance and to avoid unnecessary service calls. Please read this manual carefully.

REGISTRATION

To fill in the Drainvac product registration form, go to www.drainvac.com/client-support/register-your-drainvac

First off, we recommend you to fill out this form before you start the installation process. If you have any concerns or problems you may encounter, please contact the nearest retailer. The unit's profile will be required.



Metal tag

Model*: _____

Serial number*: _____

Retailer name: _____

Date of purchase: _____

*This information is found on a metal tag located on the left side of the unit.

TYPES OF UNITS

You have purchased one of the following models. Identify the one to relate to it. The model number appears on the technical label stuck on the left side of the unit.



- SEPA15** : Standard model
- SEPA15-FL** : Model with float
- SEPA15-CT** : Model with cartridge filter

IN	2" (5 cm) PVC/ABS
OUT	2" (5 cm) PVC
CAPACITY	10 gal. imp. (46 L)
DIMENSION	15" dia. x 29" / 38 cm dia. x 74 cm



- SEPA24-C** : Model with dust bag and cage filter

IN	2" (5 cm)
OUT	2" (5 cm)
CAPACITY	10 gal. imp. (46 L)
DIMENSION	15" dia. x 29" / 38 cm dia. x 74 cm

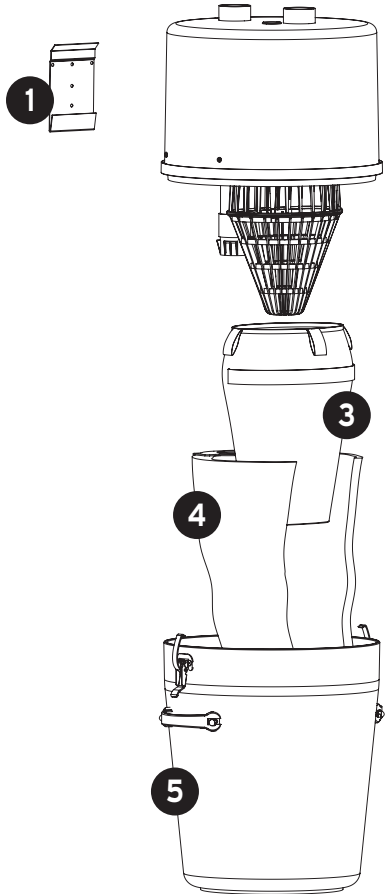


- SEPA183** : Standard model
- SEPA183-CT** : Model with cartridge filter

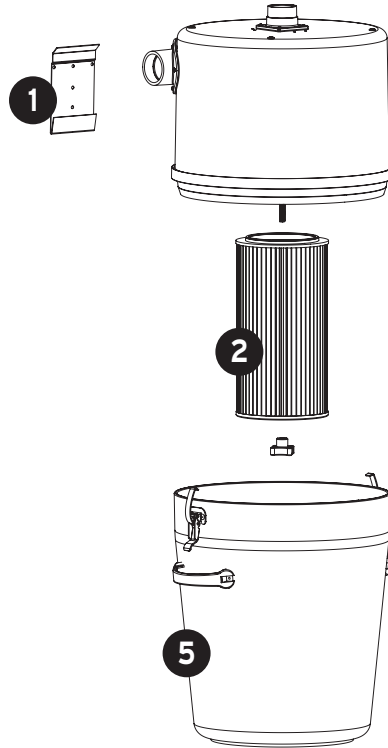
IN	3" (7.5 cm)
OUT	3" (7.5 cm)
CAPACITY	12 gal. imp. (54 L)
DIMENSION	15" dia. x 29" / 38 cm dia. x 74 cm

UNIT DESCRIPTION

- 1. Wall support
- 2. Cartridge filter
- 3. Cage filter
- 4. Dust bag
- 5. Canister



SEPA24-C



SEPA15, SEPA15-FL,
SEPA15-CT, SEPA183,
SEPA183-CT

The illustration may differ
from your model.

DUST BAG AND FILTERS

Please mark the dust bag and the filter which corresponds to your vacuum in order to refer yourself when the time will come to change it.



SAC32

Disposable cloth dust bags
3 plies, 9 gal. (41L)

SEPA24-C



FILT33DVI

Cage filter

SEPA24-C



FILT28

Cartridge filter

SEPA15-CT, SEPA183-CT

UNIT INSTALLATION

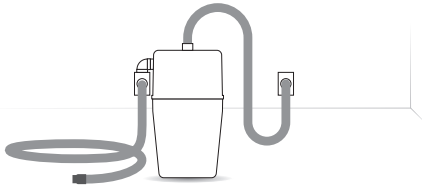
- FIRST THINGS FIRST -

Depending on your model, the separator is designed to intercept liquids and/or larger objects, or even very fine dust before they reach your main unit, thus protecting your engine from unwanted materials.

WHERE TO INSTALL

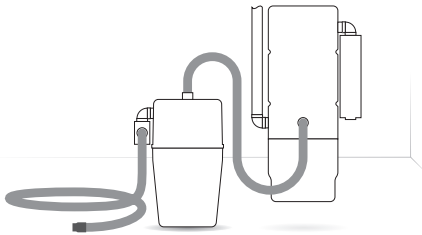
The separator can connect to a standard central vacuum wall inlet or directly to your existing central vacuum if it has a built-in inlet. Alternatively, the separator can also be permanently installed to the piping network with the main unit.

CONFIG. 1



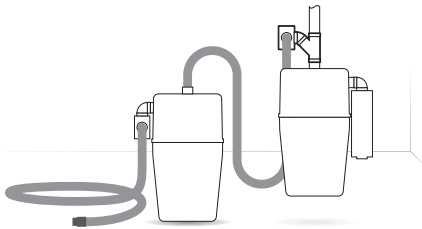
Connection into a wall inlet, for occasional use.

CONFIG. 2



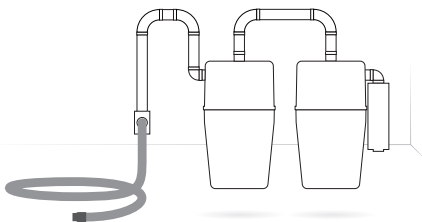
Direct connection into the main unit, for occasional use.

CONFIG. 3



If your existing unit does not have any direct inlet (other than the main pipe entry), you can add an inlet to the network. Otherwise, the nearest inlet may be sufficient.

CONFIG. 4



Permanent installation on the piping network, paired with the power unit, for regular use.

REQUIRED TOOLS



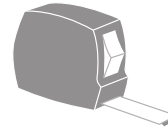
Hole Saw
2.25" (57 mm)



Drill with
0.5" (12.5 mm) bit



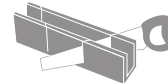
5/16" socket head,
Phillips and regular
screwdriver



Measuring
Tape



Cutting
Pliers



Mitre-Box and
Saw

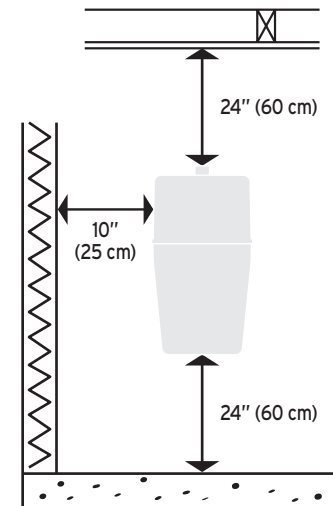
OR



PVC Pipe Cutter
2" (50 mm)

DIMENSIONS AND MINIMUM SPACING

If your plan is to permanently install the separator, it is important to install the unit so that it is easily accessible for maintenance and emptying the tank. Here are the minimum spacings required:

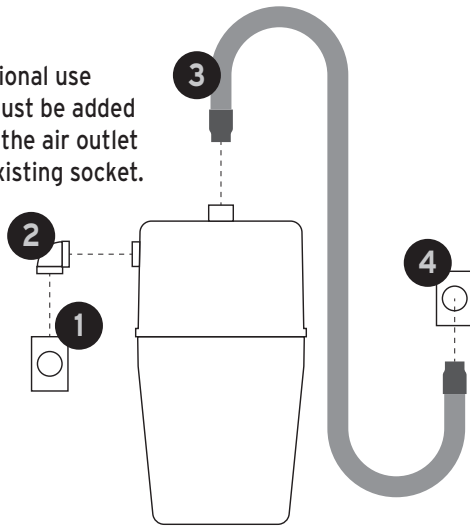


OCCASIONAL USE

If you plan to use the separator for occasional use (Config. 1, 2 and 3), an additional socket must be added to the unit's air inlet, as well as a hose to the air outlet in order to connect the separator to an existing socket.

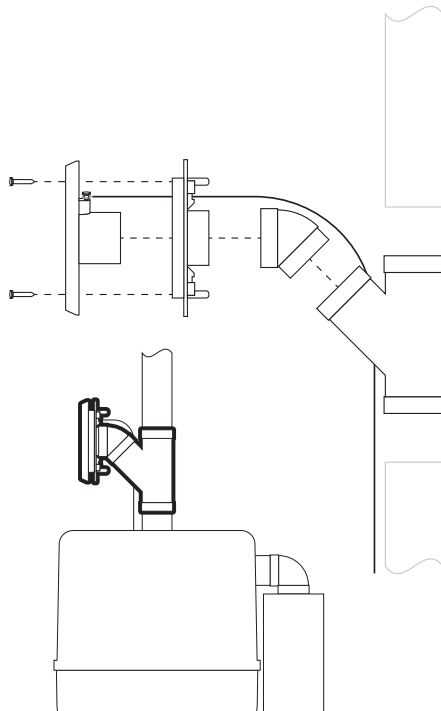
The illustration below shows the SEPA15 model, however, the assembly instructions apply to all models in the present manual.

1. Additional socket
2. 90° elbow
3. Hose
4. Existing unit or socket



To add a socket near your main device;

1. First, acquire the necessary parts for the installation
2. Assemble the pieces
3. Cut the pipeline to the desired location
4. Add your assembly to the pipeline

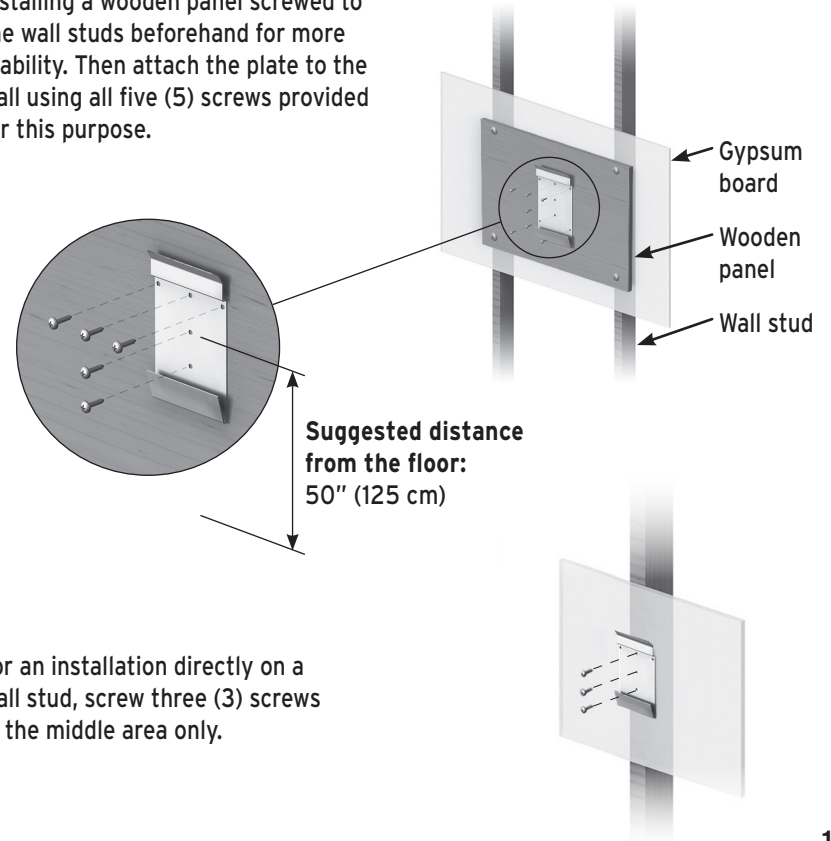
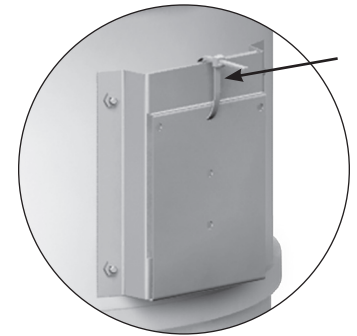


PERMANENT INSTALLATION FOR REGULAR USAGE

1) MOUNTING THE UNIT ON THE WALL

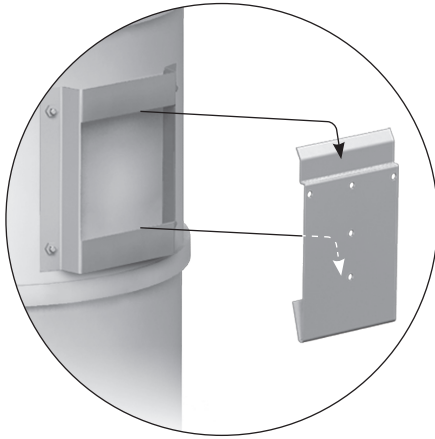
(Config. 4)

- Start by separating both parts of the wall support which can be found behind the head by cutting the zip tie.
- If the wall includes wall studs covered with gypsum board, we recommend installing a wooden panel screwed to the wall studs beforehand for more stability. Then attach the plate to the wall using all five (5) screws provided for this purpose.



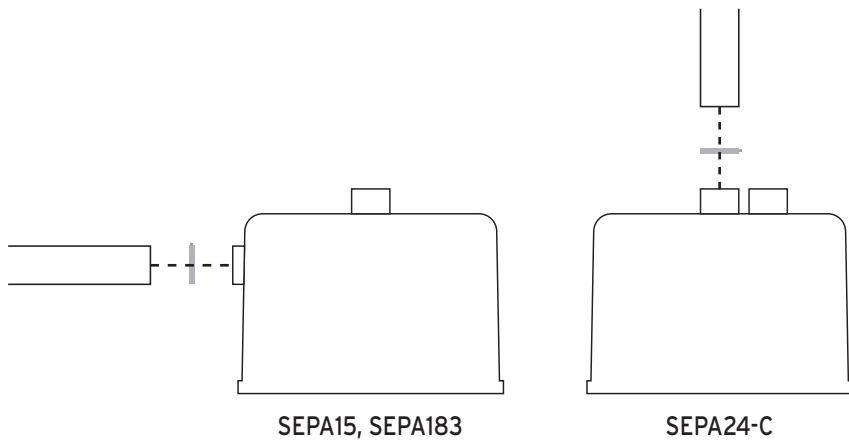
- For an installation directly on a wall stud, screw three (3) screws in the middle area only.

- Lift the unit and slide the wall support onto the wall bracket.



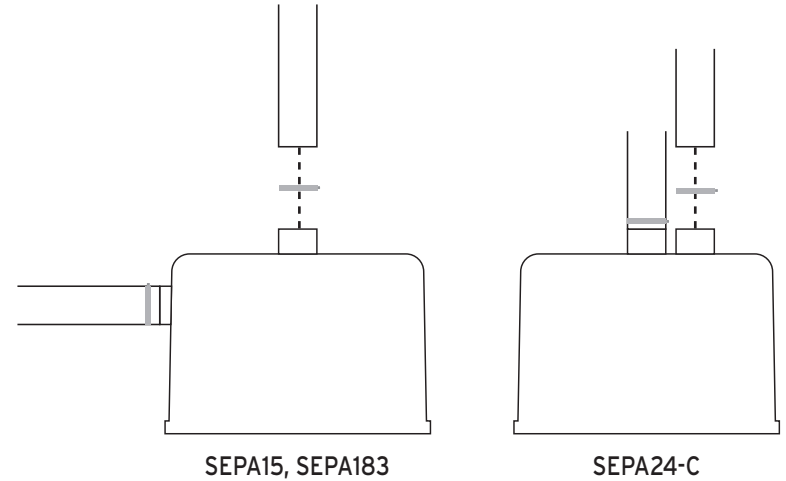
2) CONNECTING THE AIR INLET

- Connect the dust inlet onto the unit securing it with a collar (do not glue).



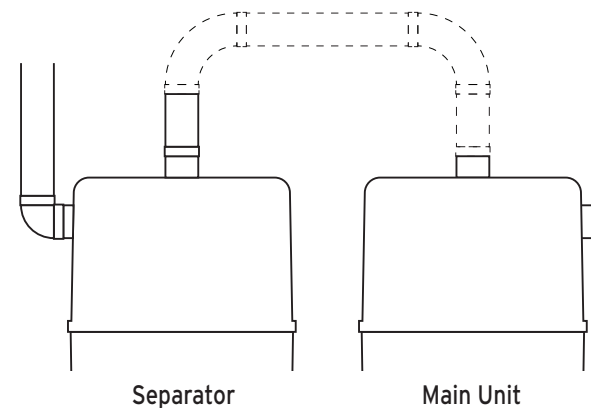
3) CONNECTING THE AIR OUTLET

- Connect the air outlet of the separator by securing everything in place using a clamp (do not glue).



4) CONNECT THE SEPARATOR TO THE MAIN UNIT

- Connect the air outlet of the separator to the air inlet of your main unit.



DUST BAG (SAC32)

The dust bag **cannot be washed or emptied**. It must be replaced with a new bag. If you feel a noticeable drop in power from your unit, this may be a sign that the dust bag is full and needs to be replaced. **DO NOT CHANGE THE BAG WHILE THE SYSTEM IS RUNNING.**



CAGE FILTER (FILT33DVI)

The filter can be easily cleaned in the washer, but **putting it in the dryer is not recommended**. It must be completely dry before being used again. We recommend cleaning the filter each time you change the bag.



CARTRIDGE FILTER (FILT28)

If necessary, clean the cartridge with water or compressed air. **Please note, the cartridge must be completely dry before being reused.**



The following procedure only applies to models that can collect liquids, namely SEPA15, SEPA15-FL, SEPA15-CT, SEPA183 and SEPA183-CT.

Cleaning wet surfaces dirties the inside of the hose. It is therefore necessary to clean it before storing everything away. These procedures eliminate any leftover liquids.

1. Vacuum 7.6 L (2 gallons) of clear water.
2. Fully extend the hose and undo any loops.
3. Keep the unit running for a few minutes as it dries out.
Optional: vacuum toilet paper to accelerate the drying process.

SUPPORT

If you would like to speak with a service agent, please contact your dealer.

To find a retailer near you, visit our website: www.drainvac.com.